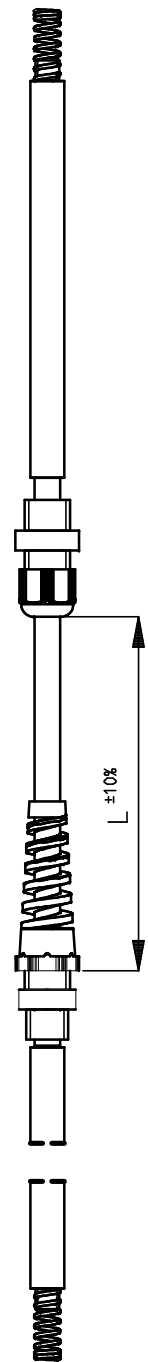


3928002608: Flexible HV Cable red Ø6 mm  
 3928002603: HV Cable Silicon white Ø6 mm



Options Cable set

3928002602: Shielded HV Cable

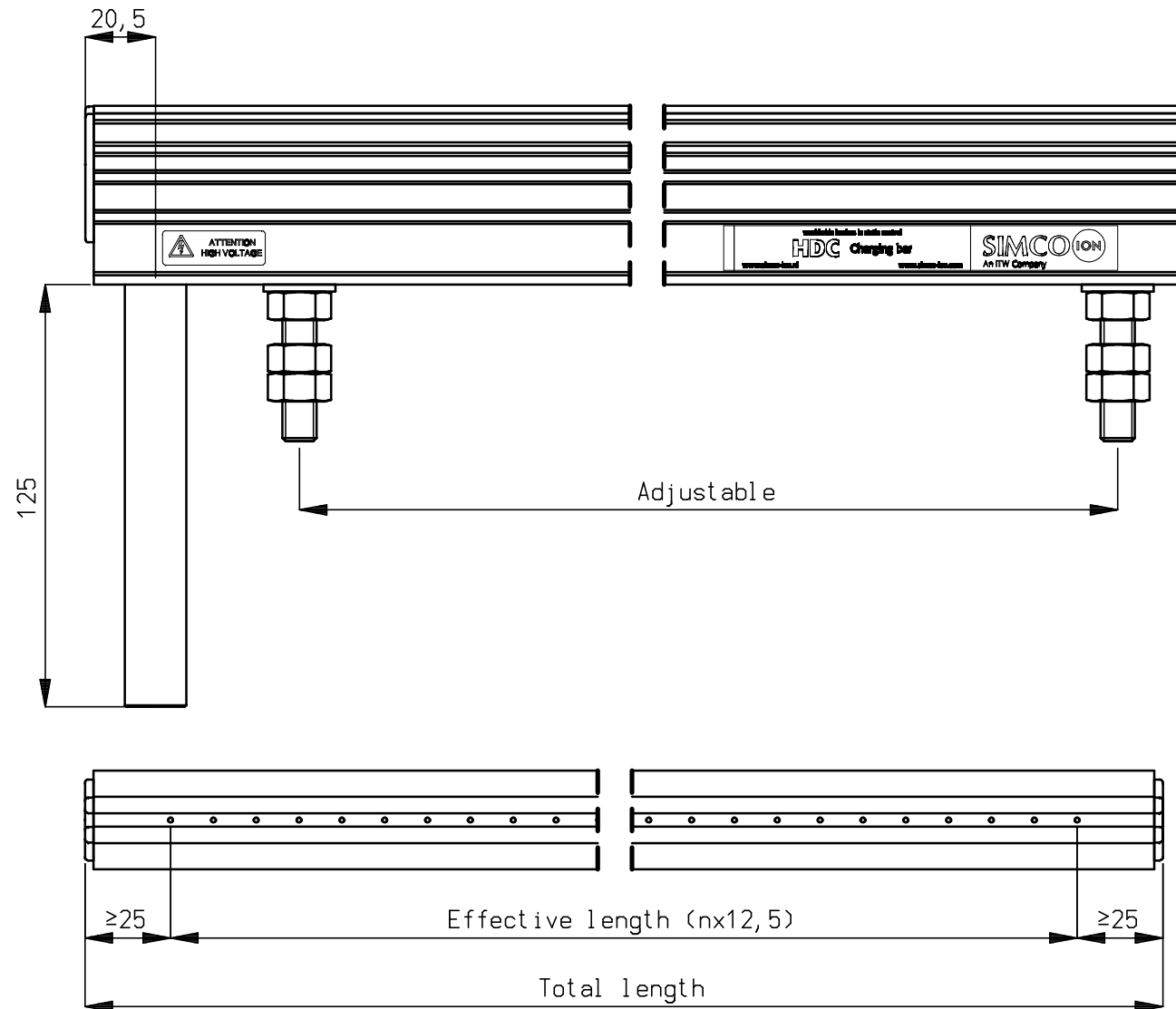
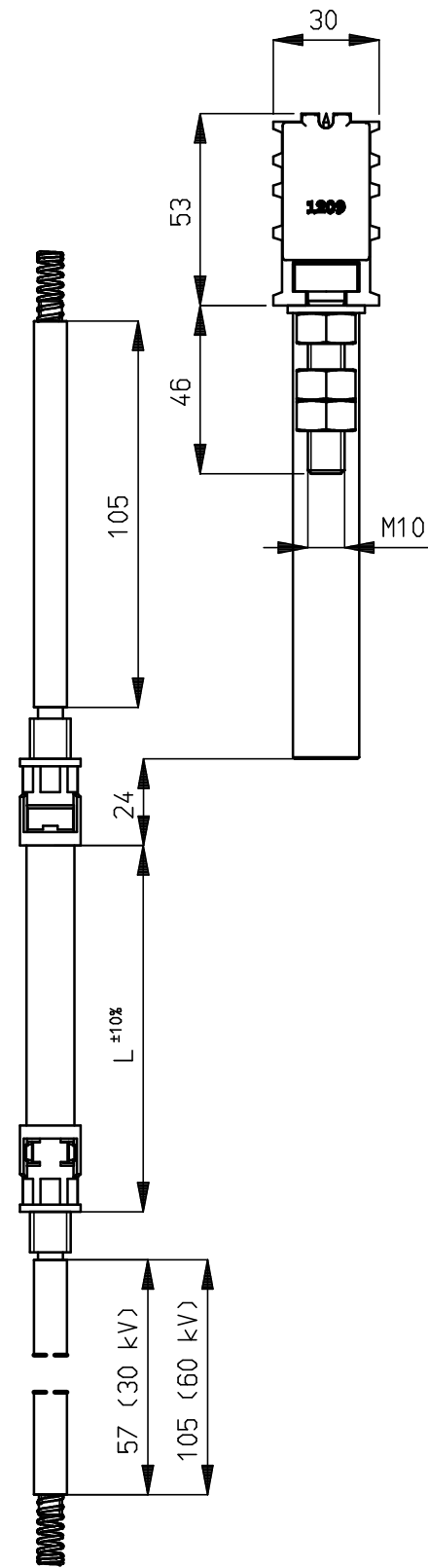
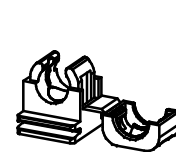


Table mounting bolts	
total length	QTY
0 - 0,5m	2
≥0,5 - 1,0m	3
≥1,0 - 1,5m	4
≥1,5 - 2,0m	5
≥2,0 - 2,5m	6
≥2,5 - 3,0m	7
≥3,0 - 3,5m	8
≥3,5 - 4,0m	9

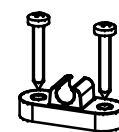
Mounting materials included

For cable (option)

Cable clamps  
 Amount of clamps =  
 (cable length(m)x4)-1

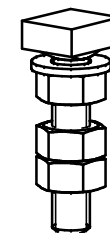


Shielded HV-cable



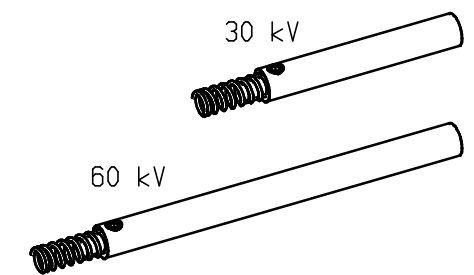
Standard HV-cable

For bar



Mounting bolts  
 Amount of bolts see table

Supply voltage max. 60 kV DC



- Use the short insulation tube (57 mm) for 30 kV applications
- Use the long insulation tube (105 mm) for 60 kV applications



www.simco-ion.nl Tel: +31 (0)573 288333

Name: Charging bar type HDC/HDR connector exit RC

Drawn: AB

Part no.: -

CAD generated NOT updated

Dimensions in mm

Date: 07-05-2001 A3 M: 1:2



ECN2017-008

Check: -

Dwg. no.: 09280220/E